

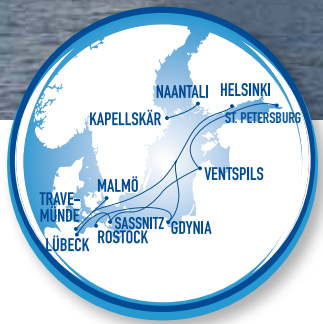


# Timetables & Fares

**Finnlines**  
a Grimaldi Group company

# 2012





## **CONTENT**

- 03** Welcome Aboard!
- 04** Finland ↔ Germany
- 08** Finland ↔ Poland
- 10** Poland ↔ Germany
- 12** Finland ↔ Sweden
- 14** Sweden ↔ Germany
- 16** Tour de Baltique
- 18** Cabins
- 20** Harbours
- 22** Conditions of Carriage
- 24** Contact





# Welcome **ABOARD!**

## Travel comfortable all year round to Finland, Poland, Germany and Sweden with Finnlines.

During the leisurely voyage across the Baltic, passengers can enjoy the ships relaxing atmosphere, spend time with family and friends and just rest and refuel before the journey continues on land. Onboard the food is tasty, cabins spacious and views stunning. Passengers can also relax in the sauna, workout at the gym, have a drink at the bar, or visit the onboard shop. Children have their own playroom and game corner.

Finnlines offers routes to and from Central Europe. Our ships take you from Travemünde to Helsinki and Malmö and from Rostock to Helsinki via Gdynia. We also offer a route from Naantali to Kapellskär.

Tip: If traveling to Germany, Poland or Finland purchase your meal package in advance and save up to 20%. It is possible to purchase meals separately onboard. If you purchase your meals package in advance, you will have the luxury of having your own table during the voyage where you can enjoy all the ships tasty meals at.

93%\* of the people who have traveled with Finnlines last summer would recommend us to their friends and family. Finnlines passengers enjoy the ships peaceful atmosphere and good food. They see sailing across

the Baltic as a more pleasurable option than driving the whole way to their destination. They also value previous good experiences onboard Finnlines.

Fares are valid until 31.12.2012 or until a new fares brochure is published.

*\*Source: Finnlines Customer Satisfaction Survey, September 2011*



## One-way fares

1.1.-31.3.	1.4.-20.6. 14.8.-30.9. (DE-FI) 1.-30.9. (FI-DE) 1.10.-31.12.	21.6.-13.8.12. (DE-FI) 21.6.-31.8.12. (FI-DE)
------------	-----------------------------------------------------------------------	--------------------------------------------------------

## Passenger fares (€) | one-way trip

<b>Adult</b>	89	89	119
<b>Junior 13-17 yrs</b>	36	36	48
<b>Child 6-12 yrs</b>	18	18	24

## Cabin fares (€) | one-way trip

<b>Recliner seat</b>	-	incl. in passenger fare	
<b>AB3 inside cabin</b> approx. 10 m <sup>2</sup> . 2 lower beds, 1 bunk bed	180	200	330
<b>AB4 inside cabin</b> approx. 10 m <sup>2</sup> . 2 lower beds, 2 bunk beds			
<b>A2 outside cabin</b> approx. 10 m <sup>2</sup> . 2 lower beds	240	265	430
<b>A4S outside cabin</b> approx. 10 m <sup>2</sup> . 2 lower beds, 2 bunk beds			
<b>A4 outside cabin</b> 16 m <sup>2</sup> . 1 double bed, 1 single lower bed, 1 bunk bed	300	330	500
<b>L4 outside cabin</b> approx. 20 m <sup>2</sup> . 1 double bed, 1 single lower bed, 1 bunk bed	420	460	690
<b>JS4 outside cabin</b> Junior Suite 32 m <sup>2</sup> . Incl. meal packages. 1 double bed, 1 sofa bed for two, 1 drink coupon/person, compli- mentary fruits and minibar.	680	750	1100
<b>OS4 outside cabin</b> Owner's Suite 38 m <sup>2</sup> . Incl. meal packages. 1 double bed, 1 sofa bed for two, 1 drink coupon/person, compli- mentary fruits and minibar.	800	880	1320
<b>Bed</b> in a AB3 cabin, incl. passenger fare	149	159	240
<b>Bed</b> in a A2 cabin, incl. passenger fare	209	225	340

## Pet fares (€) | one-way trip

<b>Dog/Cat</b> max. 2 pets / cabin (AB3, AB4, A2, A4S, L4)	80	80	80
---------------------------------------------------------------	----	----	----

The total fare is comprised of the basic passenger fare multiplied with the number of persons sharing a cabin and the cabin fare. For example Helsinki-Travemünde 1.10.12: 2 adults (2 x €89) + 1 junior (1 x €36) + AB3 cabin (1 x €200) = €414.

Children under 6 years travel for free. There are a limited amount of Recliner Seats onboard. If the seats are not in use or are sold out, a cabin booking is compulsory. Recliner Seats are not suitable or sold for children under 13 years. Fares do not include fuel surcharges. For more information see [finnlines.com](http://finnlines.com) or contact our Call Center.

If you book a return trip, we will grant you 20% discount on the return part of the trip (outward journey normal price). The discount does not apply to car packages, meals or pets.

# Helsinki ↔ Travemünde

## Helsinki ↔ Rostock



1.1.-31.3.	1.4.-20.6. 14.8.-30.9. (DE-FI) 1.-30.9. (FI-DE) 1.10.-31.12.	21.6.-13.8. (DE-FI) 21.6.-31.8. (FI-DE)
------------	-----------------------------------------------------------------------	--------------------------------------------

### Vehicle fares (€) | one-way trip

Vehicle	height max. 2,1 m	100	110	120
length max. 6 m	height over 2,1 m	180	200	220
Vehicle	height max. 2,1 m	190	200	220
length max. 8 m	height over 2,1 m	270	290	310
Vehicle	height max. 2,1 m	370	380	420
length max. 12 m	height over 2,1 m	460	470	530
<b>Each additional metre or part of metre</b>		60	65	70
<b>Motorbike</b>		60	60	70
<b>Bicycle</b>		20	20	20

Animal transport (e.g. dog teams and horses) fares will be calculated according to additional metre surcharge. Vehicles carrying commercial goods must be booked through the freight department. Please ask our Call Center for bus prices.

Adult	Junior 13-17 yrs	Child 6-12 yrs
-------	---------------------	-------------------

### Meal prices (€) | person, all meals served in the Buffet Restaurant

Meal package	Travemünde-Helsinki 2 x breakfast, 1 x lunch, 1 x dinner	50	37,50	25
bought in advance	Helsinki-Travemünde 1 x breakfast, 1 x lunch, 2 x dinner	60	45	30
	Helsinki-Rostock / Rostock-Helsinki 2 x breakfast, 1 x lunch, 2 x dinner	65	49	32,50
Meals	<b>Breakfast</b>	10	7,50	5
bought onboard	<b>Lunch</b>	17	13	8,50
	<b>Dinner</b>	22	16,50	11

### Timetable

#### Helsinki → Travemünde Helsinki → Gdynia → Rostock

Departure	Arrival/ Departure Gdynia	Arrival	
Mon 17:30	-	Tue 20:30	TRA
Tue 17:30	-	Wed 20:30	TRA
Tue 18:30	Wed 15:00/17:00	Thu 07:00	ROS
Wed 17:30	-	Thu 20:30	TRA
Thu 17:30	-	Fri 20:30	TRA
Thu 18:30	Fri 15:00/17:00	Sat 07:00	ROS
Fri 17:30	-	Sat 20:30	TRA
Sat 17:30	-	Sun 20:30	TRA
Sat 18:30	Sun 15:00/17:00	Mon 07:00	ROS
Sun 15:00	-	Mon 20:30	TRA

#### Travemünde → Helsinki Rostock → Gdynia → Helsinki

Departure	Arrival/ Departure Gdynia	Arrival	
Mon 03:00	TRA -	Tue 07:30	
Tue 03:00	TRA -	Wed 07:30	
Tue 16:00	ROS Wed 07:30/10:30	Thu 09:00	
Wed 03:00	TRA -	Thu 07:30	
Thu 03:00	TRA -	Fri 07:30	
Thu 16:00	ROS Fri 07:30/10:30	Sat 09:00	
Fri 03:00	TRA -	Sat 07:30	
Sat 03:00	TRA -	Sun 08:00	
Sat 16:00	ROS Sun 07:30/10:30	Mon 09:00	
Sun 03:00	TRA -	Mon 07:30	

Travel time Helsinki-Rostock (via Gdynia) approx. 38 hours and Helsinki-Travemünde approx. 27 hours. On route Helsinki-Travemünde Sunday timetable operates on public holidays. Timetables in local time.

**Cruise fares**

The return trip must be on the same ship after a turnaround at the final destination.

1.1.-31.3.	1.4.-20.6. 14.8.-30.9. (PL-FI) 1-30.9. (FI-PL) 1.10.-31.12.	21.6.-13.8. (PL-FI) 21.6.-31.8. (FI-PL)
------------	----------------------------------------------------------------------	--------------------------------------------------

**Passenger fares (€) | cruise**

<b>Adult</b>	112	112	160
<b>Junior 13-17 yrs</b>	45	45	64
<b>Child 6-12 yrs</b>	22	22	32

**Cabin fares (€) | cruise**

<b>AB3 inside cabin</b> approx. 10 m <sup>2</sup> . 2 lower beds, 1 bunk bed	227	252	445
<b>AB4 inside cabin</b> approx. 10 m <sup>2</sup> . 2 lower beds, 2 bunk beds			
<b>A2 outside cabin</b> approx. 10 m <sup>2</sup> . 2 lower beds	302	332	577
<b>A4S outside cabin</b> approx. 10 m <sup>2</sup> . 2 lower beds, 2 bunk beds			
<b>A4 outside cabin</b> approx. 16 m <sup>2</sup> . 1 double bed, 1 single lower bed, 1 bunk bed	378	416	673
<b>L4 outside cabin</b> approx. 20 m <sup>2</sup> . 1 double bed, 1 single lower bed, 1 bunk bed	529	582	927
<b>JS4 outside cabin</b> Junior Suite 32 m <sup>2</sup> . Incl. meal pa- ckages. 1 double bed, 1 sofa bed for two, 1 drink coupon/ person, complimentary fruits and minibar.	857	943	1481
<b>OS4 outside cabin</b> Owner's Suite 38 m <sup>2</sup> . Incl. meal packages. 1 double bed, 1 sofa bed for two, 1 drink coupon/person, complimen- tary fruits and minibar.	1008	1109	1777
<b>Bed</b> in a AB3 cabin, incl. passenger fare	188	201	322
<b>Bed</b> in a A2 cabin, incl. passenger fare	263	284	458

**Pet fares (€) | cruise**

<b>Dog/Cat</b> max. 2 pets / ca- bin (AB3, AB4, A2, A4S, L4)	80	80	80
-----------------------------------------------------------------	----	----	----

**The total fare is comprised of the basic passenger fare multiplied with the number of persons sharing a cabin and the cabin fare.** For example Helsinki-Travemünde-Helsinki 1.10.: 2 adults (2 x €112) + 1 junior (1 x €45) + AB3 cabin (1 x €252) = €521.

Children under 6 years travel for free. Fares do not include fuel surcharges.  
For more information see [finnlines.com](http://finnlines.com) or contact our Call Center.

# Helsinki ↔ Travemünde

# Helsinki ↔ Rostock



Adult	Junior 13-17 yrs	Child 6-12 yrs
-------	---------------------	-------------------

## Meal prices (€) | person, all meals served in the Buffet Restaurant

<b>Meal Package</b>	<b>Helsinki-Travemünde-Helsinki</b> 3 x breakfast, 2 x lunch, 3 x dinner	88	66	44
	bought in advance <b>Helsinki-Rostock-Helsinki</b> 4 x breakfast, 2 x lunch, 4 x dinner	104	78	52
<b>Meals</b>	<b>Breakfast</b>	10	7,50	5
	bought onboard <b>Lunch</b>	17	13	8,50
	<b>Dinner</b>	22	16,50	11

### Example Cruise Schedule Helsinki-Rostock-Helsinki

- Day 1 (Tue/Thu): Check-in by 17.30. Ship departs 18.30.
- Day 2 (Wed/Fri): Day at Sea. The ship stops at Gdynia, no possibility to disembark the vessel.
- Day 3 (Thu/Sat): Arrival in Rostock 07.00. Time in Rostock. The ship departs at 16.00.
- Day 4 (Fri/Sun): Day at Sea. The ship stops at Gdynia, no possibility to disembark the vessel.
- Day 5 (Sat/Mon): Arrival in Helsinki 09.00



## One-way fares

	1.1.-31.3.	1.4.-20.6. 14.8.-30.9. (PL-FI) 1-30.9. (FI-PL) 1.10.-31.12.	21.6.-13.8. (PL-FI) 21.6.-31.8. (FI-PL)
--	------------	----------------------------------------------------------------------	--------------------------------------------------

## Passenger fares (€) | one-way trip

	1.1.-31.3.	1.4.-20.6. 14.8.-30.9. (PL-FI) 1-30.9. (FI-PL) 1.10.-31.12.	21.6.-13.8. (PL-FI) 21.6.-31.8. (FI-PL)
<b>Adult</b>	62	62	83
<b>Junior 13-17 yrs</b>	25	25	33
<b>Child 6-12 yrs</b>	12	12	17

## Cabin fares (€) | one-way trip

	1.1.-31.3.	1.4.-20.6. 14.8.-30.9. (PL-FI) 1-30.9. (FI-PL) 1.10.-31.12.	21.6.-13.8. (PL-FI) 21.6.-31.8. (FI-PL)
<b>Recliner seat</b>	-	incl. in passenger fare	
<b>AB3 inside cabin</b> approx. 10 m <sup>2</sup> . 2 lower beds, 1 bunk bed	130	144	240
<b>AB4 inside cabin</b> approx. 10 m <sup>2</sup> . 2 lower beds, 2 bunk beds			
<b>A2 outside cabin</b> approx. 10 m <sup>2</sup> . 2 lower beds	185	204	305
<b>A4S outside cabin</b> approx. 10 m <sup>2</sup> . 2 lower beds, 2 bunk beds			
<b>A4 outside cabin</b> approx. 16 m <sup>2</sup> . 1 double bed, 1 single lower bed, 1 bunk bed	215	237	355
<b>L4 outside cabin</b> approx. 20 m <sup>2</sup> . 1 double bed, 1 single lower bed, 1 bunk bed	300	330	480
<b>JS4 outside cabin</b> Junior Suite 32 m <sup>2</sup> . Incl. meal pack- ages. 1 double bed, 1 sofa bed for two, 1 drink coupon/ person, complimentary fruits and minibar.	480	528	770
<b>OS4 outside cabin</b> Owner's Suite 38 m <sup>2</sup> . Incl. meal packages. 1 double bed, 1 sofa bed for two, 1 drink coupon/person, complimen- tary fruits and minibar.	560	616	920
<b>Bed</b> in a AB3 cabin, incl. passenger fare	105	112	170
<b>Bed</b> in a A2 cabin, incl. passenger fare	155	167	240

## Pet fares (€) | one-way trip

<b>Dog/Cat</b> max. 2 pets / ca- bin (AB3, AB4, A2, A4S, L4)	72	72	72
-----------------------------------------------------------------	----	----	----

The total fare is comprised of the basic passenger fare multiplied with the number of persons sharing a cabin and the cabin fare. For example Helsinki-Gdynia 1.10.: 2 adults (2 x €62) + 1 junior (1 x €25) + AB3 cabin (1 x €144) = €293.

Children under 6 years travel for free. There are a limited amount of Recliner Seats onboard. If the seats are not in use or are sold out, a cabin booking is compulsory. Recliner Seats are not suitable or sold for children under 13 years. Fares do not include fuel surcharges. For more information see [finnlines.com](http://finnlines.com) or contact our Call Center.

**If you book a return trip, we will grant you 20% discount on the return part of the trip** (outward journey normal price). The discount does not apply to car packages, meals or pets.



1.1.-31.3.	1.4.-20.6. 14.8.-30.9. (PL-FI) 1.-30.9. (FI-PL) 1.10.-31.12.	21.6.-13.8. (PL-FI) 21.6.-31.8. (FI-PL)
------------	-----------------------------------------------------------------------	--------------------------------------------

## Vehicle fares (€) | one-way trip

<b>Vehicle</b> length max. 6 m	height max. 2,1 m	90	99	108
	height over 2,1 m	162	180	198
<b>Vehicle</b> length max. 8 m	height max. 2,1 m	171	180	198
	height over 2,1 m	243	260	279
<b>Vehicle</b> length max. 12 m	height max. 2,1 m	333	343	380
	height over 2,1 m	414	422	476
<b>Each additional metre or part of metre</b>		54	58	63
<b>Motorbike</b>		54	54	63
<b>Bicycle</b>		18	18	18

Animal transport (e.g. dog teams and horses) fares will be calculated according to additional metre surcharge. Vehicles carrying commercial goods must be booked through the freight department. Please ask our Call Center for bus prices.

<b>Adult</b>	<b>Junior</b> 13-17 yrs	<b>Child</b> 6-12 yrs
--------------	----------------------------	--------------------------

## Meal prices (€) | person, all meals served in the Buffet Restaurant

<b>Meal package</b> bought in advance	<b>One-way trip</b> 1 x breakfast, 1 x lunch, 1 x dinner	40	30	20
	<b>Breakfast</b>	10	7,50	5
<b>Meals</b> bought onboard	<b>Lunch</b>	17	13	8,50
	<b>Dinner</b>	22	16,50	11

## Timetable

### Helsinki → Gdynia

Departure	Arrival
Tue 18:30	Wed 15:00
Thu 18:30	Fri 15:00
Sat 18:30	Sun 15:00

### Gdynia → Helsinki

Departure	Arrival
Wed 10:30	Thu 09:00
Fri 10:30	Sat 09:00
Sun 10:30	Mon 09:00

Travel time Helsinki-Gdynia on approx. 21 hours.  
Timetables in local time.



## One-way fares

1.1.-31.3.12.	1.4.-20.6. 14.8.-30.9. (DE-PL) 1.-30.9. (PL-DE) 1.10.-31.12.	21.6.-13.8. (DE-PL) 21.6.-31.8. (PL-DE)
---------------	-----------------------------------------------------------------------------	--------------------------------------------------

## Passenger fares (€) | one-way trip

<b>Adult</b>	39	39	46
<b>Junior</b> 13-17 yrs	16	16	18
<b>Child</b> 6-12 yrs	8	8	9

## Cabin fares (€) | one-way trip

<b>Recliner seat</b>	-	incl. in passenger fare	
<b>AB3 inside cabin</b> approx. 10 m <sup>2</sup> . 2 lower beds, 1 bunk bed	72	80	97
<b>AB4 inside cabin</b> approx. 10 m <sup>2</sup> . 2 lower beds, 2 bunk beds			
<b>A2 outside cabin</b> approx. 10 m <sup>2</sup> . 2 lower beds	100	110	130
<b>A4S outside cabin</b> approx. 10 m <sup>2</sup> . 2 lower beds, 2 bunk beds			
<b>A4 outside cabin</b> approx. 16 m <sup>2</sup> . 1 double bed, 1 single lower bed, 1 bunk bed	120	132	155
<b>L4 outside cabin</b> approx. 20 m <sup>2</sup> . 1 double bed, 1 single lower bed, 1 bunk bed	170	187	200
<b>JS4 outside cabin</b> Junior Suite 32 m <sup>2</sup> . Incl. meal packages. 1 double bed, 1 sofa bed for two, 1 drink coupon/person, complimentary fruits and minibar.	270	297	330
<b>OS4 outside cabin</b> Owner's Suite 38 m <sup>2</sup> . Incl. meal packages. 1 double bed, 1 sofa bed for two, 1 drink coupon/person, complimentary fruits and minibar.	320	352	396
<b>Bed</b> in a AB3 cabin, incl. passenger fare	63	67	82
<b>Bed</b> in a A2 cabin, incl. passenger fare	89	96	114

## Pet fares (€) | one-way trip

<b>Dog/Cat</b> max. 2 pets / cabin (AB3, AB4, A2, A4S, L4)	64	64	64
---------------------------------------------------------------	----	----	----

The total fare is comprised of the basic passenger fare multiplied with the number of persons sharing a cabin and the cabin fare. For example Gdynia-Rostock 2.10.: 2 adults (2 x €39) + 1 junior (1 x €16) + AB3 cabin (1 x €80) = €174.

Children under 6 years travel for free. There are a limited amount of Recliner Seats onboard. If the seats are not in use or are sold out, a cabin booking is compulsory. Recliner Seats are not suitable or sold for children under 13 years. Fares do not include fuel surcharges. For more information see [finnlines.com](http://finnlines.com) or contact our Call Center.

If you book a return trip, we will grant you 20% discount on the return part of the trip (outward journey normal price). The discount does not apply to car packages, meals or pets.

## Timetable

## Gdynia → Rostock

Departure	Arrival
Wed 17:00	Thu 07:00
Fri 17:00	Sat 07:00
Sun 17:00	Mon 07:00

## Rostock → Gdynia

Departure	Arrival
Tue 16:00	Wed 07:30
Thu 16:00	Fri 07:30
Sat 16:00	Sun 07:30

Travel time Gdynia-Rostock on approx. 15 hours. Timetables in local time.



1.1.-31.3.	1.4.-20.6. 14.8.-30.9. (DE-PL) 1.-30.9. (PL-DE) 1.10.-31.12.	21.6.-13.8. (DE-PL) 21.6.-31.8. (PL-DE)
------------	-----------------------------------------------------------------------	--------------------------------------------

## Vehicle fares (€) | one-way trip

<b>Vehicle</b> length max. 6 m	height max. 2,1 m	80	88	96
	height over 2,1 m	144	160	176
<b>Vehicle</b> length max. 8 m	height max. 2,1 m	152	160	176
	height over 2,1 m	216	231	248
<b>Vehicle</b> length max. 12 m	height max. 2,1 m	296	305	337
	height over 2,1 m	368	375	423
<b>Each additional metre or part of metre</b>		48	52	56
<b>Motorbike</b>		48	48	56
<b>Bicycle</b>		16	16	16

Animal transport (e.g. dog teams and horses) fares will be calculated according to additional metre surcharge. Vehicles carrying commercial goods must be booked through the freight department. Please ask our Call Center for bus prices.

<b>Adult</b>	<b>Junior</b> 13-17 yrs	<b>Child</b> 6-12 yrs
--------------	----------------------------	--------------------------

## Meal prices (€) | person, all meals served in the Buffet Restaurant

<b>Meal package</b> bought in advance	<b>one-way trip</b> 1 x breakfast, 1 x dinner	25	19	12,50
	<b>Breakfast</b>	10	7,50	5
<b>Meals</b> bought onboard	<b>Dinner</b>	22	16,50	11



## One-way fares

1.1.-31.3.		1.4.-20.6. 1.9.-31.12.		21.6.-31.8.	
A	B	A	B	A	B

## Passenger fares (€) | one-way trip

	1.1.-31.3.	1.4.-20.6. 1.9.-31.12.	21.6.-31.8.
<b>Adult</b>	45	45	45
<b>Junior</b> 13-17 yrs	34	34	34
<b>Child</b> 6-12 yrs	23	23	23

## Cabin fares (€) | one-way trip

	1.1.-31.3.	1.4.-20.6. 1.9.-31.12.	21.6.-31.8.
<b>AB2 inside cabin</b> 1 lower bed, 1 bunk bed	20	30	60
<b>AB4 inside cabin</b> 2 lower beds, 2 bunk beds	30	40	70
<b>A2 outside cabin</b> 1 lower bed, 1 bunk bed	30	40	70
<b>A3 outside cabin</b> 2 lower beds, 1 bunk bed	35	45	75
<b>A4 outside cabin</b> 2 lower beds, 2 bunk beds	40	50	80

## Meals

Two meals/person	included in the price.
------------------	------------------------

## Pet fares (€) | one-way trip

<b>Dog/Cat</b> max. 2 pets / cabin. Inside cabins only.	30
------------------------------------------------------------	----

Price categories A and B refer to different departures (see timetable).

The total fare is comprised of the basic passenger fare multiplied with the number of persons sharing a cabin and the cabin fare. For example Naantali-Kapellskär 1.10. at 9:30: 2 adults (2 x €45) + 1 junior (1 x €34) + AB4 cabin (1 x €35) + car (1 x €20) = €179 (incl. meals onboard).

Children under 6 years travel for free. Fares do not include fuel surcharges.

For more information see [finnlines.com](http://finnlines.com) or contact our Call Center.

If you book a return trip, we will grant you 20% discount on the return part of the trip (outward journey normal price). The discount does not apply to car packages, meals or pets.





1.1.-31.3.		1.4.-20.6. 1.9.-31.12.		21.6.-31.8.	
A	B	A	B	A	B

Vehicle fares (€)   height max. 4,4 m							
<b>Vehicle</b>	length max. 6 m	15	50	20	55	35	110
	length max. 8 m	60	95	65	100	85	160
	length max. 12 m	110	170	120	180	135	260
<b>Each additional metre or part of metre</b>		20	30	25	35	25	35
<b>Motorcycle</b>		15	45	20	50	30	65
<b>Bicycle</b>		15	15	15	15	15	30

## Timetable

### Naantali → Kapellskär

Departure			Arrival	
B	Sun-Fri	09:30	Sun-Fri	16:30
A	Mon-Fri	17:00	Sun-Fri	23:15
B	Sun-Fri	22:30 *	Mon-Sat	05:30
A	Sat	09:30	Sat	16:30
B		22:30 *	Sun	05:30

### Kapellskär → Naantali

Departure			Arrival	
A	Tue-Sat	01:00 *	Mon-Sat	10:00
A	Mon-Sat	09:15	Mon-Sat	18:15
B	Mon-Sat	21:45 *	Tue-Sun	06:45
A	Sun	09:15	Sun	18:15
B		21:45 *	Mon	06:45

\* Cabin booking is compulsory on evening and night departures.  
On this route passengers are only allowed onboard with vehicles.  
Travel time approx. 8 hours. Timetables in local time.



**CAR PACKAGE:**  
1-5 persons  
+ vehicle from  
**60€**

1.1.-31.3.				1.4.-20.6. 1.9.-31.12.			21.6.-31.8.			
A	B	C	D	A/B	C	D	A/B	C	D	

### Package fare (€) | one-way trip

<b>1-5 persons and vehicle</b> length max. 6 m	60	75	85	119	64	90	125	95	129	148
<b>Additional persons in vehicle</b>	see Passenger fares below.									
<b>Each additional metre or part of metre</b>	20			20			20			
<b>Motorbike and 1-2 passengers</b>	35	45	55	65	35	55	65	55	75	85
<b>Bicycle and 1 passenger</b>	30			30			30			

Package prices include the basic passenger fares. Limited offer.

\* Cabin booking is compulsory on night departures (see timetable).

### One-way fares

1.1.-31.12.

### Passenger fares (€) | one-way trip

<b>Adult</b>	30				
<b>Junior 13-17 yrs</b>	22,50				
<b>Child 6-12 yrs</b>	15				
	<table border="1"> <thead> <tr> <th>Day departure</th> <th>Night departure</th> </tr> <tr> <th></th> <th>1.1-31.3   1.4-31.12</th> </tr> </thead> </table>	Day departure	Night departure		1.1-31.3   1.4-31.12
Day departure	Night departure				
	1.1-31.3   1.4-31.12				

### Cabin fares (€) | one-way trip

<b>AB1 inside cabin</b> 1 lower bed	20	40	45
<b>ABB2 inside cabin</b> 1 lower bed, 1 bunk bed	20	40	45
<b>AB2 inside cabin</b> 2 lower beds	30	60	
<b>AB4 inside cabin</b> 2 lower beds, 2 bunk beds	30	80	
<b>A2 outside cabin</b> 1 lower bed, 1 bunk bed	45	80	
<b>A3 outside cabin</b> 2 lower beds, 1 bunk bed	45	90	
<b>A4 outside cabin</b> 2 lower beds, 2 bunk beds	45	100	
<b>OS2 outside cabin superior</b> 2 lower beds	45	100	

### Pet fares (€) | one-way trip

<b>Dog/Cat</b> max. 2 pets / cabin Outside cabins only	20
-----------------------------------------------------------	----

Price categories A-D refer to different departures (see timetable).

The total fare is comprised of the basic passenger fare multiplied with the number of persons sharing a cabin and the cabin fare. For example Malmö-Travemünde 1.10. at 16.30: 2 adults (2 x €30) + 1 junior (1 x €22,50) + AB4 cabin (1 x €30) = €112,50.

Children under 6 years travel for free. Fares do not include fuel surcharges.

For more information see [finnlines.com](http://finnlines.com) or contact our Call Center.

**If you book a return trip, we will grant you 20% discount on the return part of the trip** (outward journey normal price). The discount does not apply to car packages, meals or pets.



1.1.-31.3.			1.4.-20.6. 1.9.-31.12.			21.6.-31.8.		
A	B/C	D	A/B	C	D	A/B	C	D

Vehicle fares (€)   one-way trip									
Vehicle length max. 6 m	30	40	80	30	40	80	40	80	90
Vehicle length max. 8 m	60	80	120	Price for a vehicle up to 6 m + €20 for each additional metre or part of metre.					
Vehicle length max. 12 m	80	120	200						
Each additional metre or part of metre	20								

Price categories A-D refer to different departures (see timetable).

Vehicles carrying commercial goods must be booked through the freight department.

Adult	Junior 13-17 yrs	Child 6-12 yrs
-------	---------------------	-------------------

Meal prices (€)   person, all meals served in the Buffet Restaurant				
<b>Meal package</b> bought in advance	Breakfast / Brunch / Night Snack + Lunch / Dinner	18	14	9
	Breakfast / Brunch / Night Snack	7	5,50	3,50
<b>Meal Package</b> bought onboard	Breakfast / Brunch / Night Snack	15	11,50	7,50
	Lunch / Dinner			

## Timetable

### Travemünde → Malmö

Departure		Arrival	
A	Mon	03:00*	Mon 11:45
C		22:00*	Tue 07:00
A	Tue-Fri	02:30*	Tue-Fri 11:15
B		10:00	Tue-Fri 19:00
C	Tue-Thu	22:00*	Wed-Fri 07:00
D	Fri	22:00*	Sat 07:00
A	Sat	03:00*	Sat 11:45
B		11:00	Sat 20:00
D		22:00*	Sun 07:00
A	Sun	01:30*	Sun 11:15
B		11:00	Sun 20:00
C		22:00*	Mon 07:00

### Malmö → Travemünde

Departure		Arrival	
A	Mon	16:00	Tue 00:45
C		22:00*	Tue 07:00
B	Tue-Fri	10:00	Tue-Fri 19:00
A		16:00	Wed-Sat 00:45
C	Tue-Thu	22:00*	Wed-Fri 07:00
D	Fri	22:00*	Sat 07:00
B	Sat	10:00	Sat 19:00
A		13:30	Sat 23:15
D		23:00*	Sun 08:30
B	Sun	10:00	Sun 19:00
A		16:00	Mon 01:15
C		22:00*	Mon 07:00

\* Cabin booking compulsory on night departures.

Travel time approx. 9 hours. Timetables in local time.



## Plan your tour **AROUND THE BALTIC**

The Baltic region offers plenty of interesting and fun activities for travelers of all ages: go and explore its beautiful scenarios and exciting sights you never knew even existed. Finnlines takes you from Helsinki to Germany and Poland, Naantali to Kapellskär and Malmö to Travemünde. Enrich your holiday and realize every travelers dream - plan your own facinating tour around the Baltic.

**The best part is, you only pay full price for the first leg of your journey. *You will receive a 20% discount*** on all the other reserved legs, when you book all legs at the same time. There is no better time than now to start planning your own tour around the Baltic.



Helsinki



**TOUR DE  
BALTIQUE**  
more information  
about destinations  
[finnlines.com](http://finnlines.com)

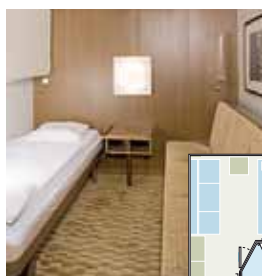


Gdansk

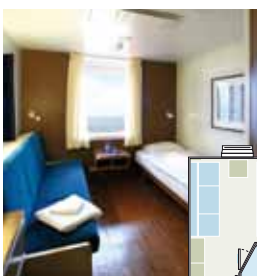
Helsinki-Travemünde / Helsinki-Gdynia-Rostock

Vessel	STAR class					Equipped with
	Size	Lower beds	Bunk beds	Double beds	Sofa beds	
AB3 inside cabin	10 m <sup>2</sup>	2	1	-	-	Shower/toilet, TV, phone, hairdryer, air conditioning
AB4 inside cabin	10 m <sup>2</sup>	2	2	-	-	
A2 outside cabin	10 m <sup>2</sup>	2	-	-	-	
A4S outside cabin	10 m <sup>2</sup>	2	2	-	-	
A4/L4 outside cabin	16 m <sup>2</sup> / 20 m <sup>2</sup>	1	1	1	-	Shower/toilet, TV, phone, hairdryer, air conditioning, refrigerator, safety deposit box, trouser press
Suite	32 m <sup>2</sup> / 38 m <sup>2</sup>	-	-	1	1	

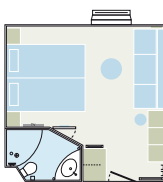
Changes to cabins possible.



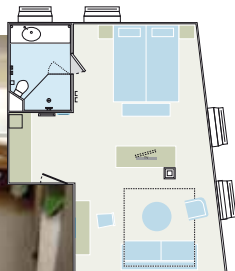
AB3/AB4 cabin



A2/A4S cabin



A4 cabin



Suite



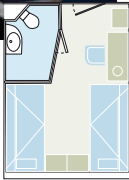
## Malmö-Travemünde

Vessel	HANSA class*			
Cabin	Size	Lower beds	Bunk beds	Equipped with
AB1 inside cabin	9 m <sup>2</sup>	1	-	Shower/toilet, air conditioning, partially with TV & phone
ABB2 inside cabin	9 m <sup>2</sup>	1	1	
AB2 inside cabin	9 m <sup>2</sup>	2	-	
AB4 inside cabin	11 m <sup>2</sup>	2	2	
A2 outside cabin	9 m <sup>2</sup>	1	1	
A3 outside cabin	11 m <sup>2</sup> / 20 m <sup>2</sup> *	2	1	
A4 outside cabin	11 m <sup>2</sup> / 20 m <sup>2</sup> *	2	2	
OS outside cabin	12-15 m <sup>2</sup>	2	-	

\* 20 m<sup>2</sup> cabins equipped with a refrigerator and safety deposit box.



AB4 cabin



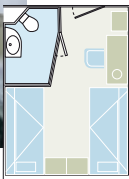
A3 cabin (20 m<sup>2</sup>)

## Naantali-Kapellskär

Vessel	CLIPPER class			
Cabin	Size	Lower beds	Bunk beds	Equipped with
AB2 inside cabin	9 m <sup>2</sup>	1	1	Shower/toilet, air conditioning, TV & phone
AB4 inside cabin	11 m <sup>2</sup>	2	2	
A2 outside cabin	9 m <sup>2</sup>	1	1	
A3 outside cabin	9 m <sup>2</sup>	2	1	
A4 outside cabin	11 m <sup>2</sup>	2	2	

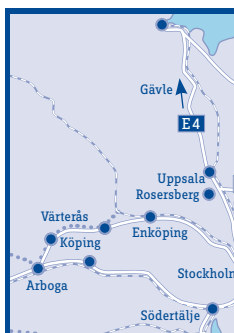


A4 cabin



AB2 cabin

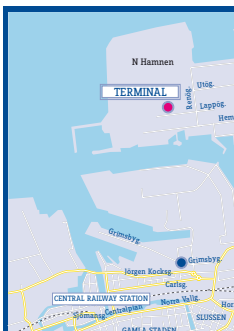




## KAPELLSKÄR

76015 Gräddö

Tel. +46 176 207 604, +

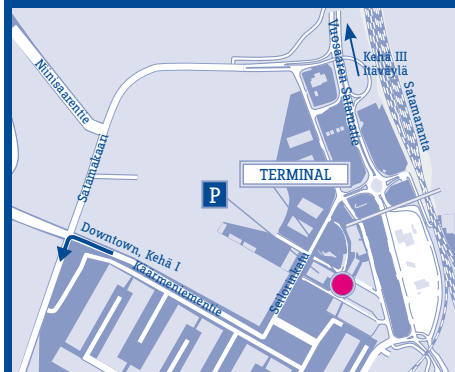


## MALMÖ

Norra Hamnen,

Lappögatan 3B, 211 24

Tel. +46 40 17 6800



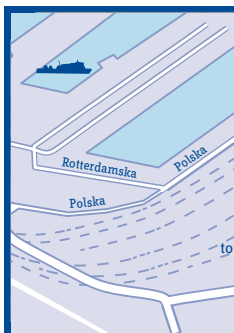
## HELSINKI

Hansa-Terminal, Vuosaari,  
Provanttikatu 5, 00980 Helsinki  
Tel. +358 10 343 4810



## NAANTALI

Satamatie 11, 21100 Naantali  
Tel. +358 50 565 2578

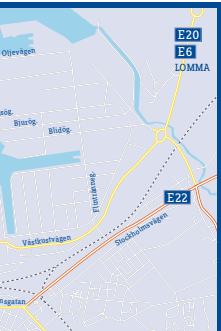


## GDYNIA

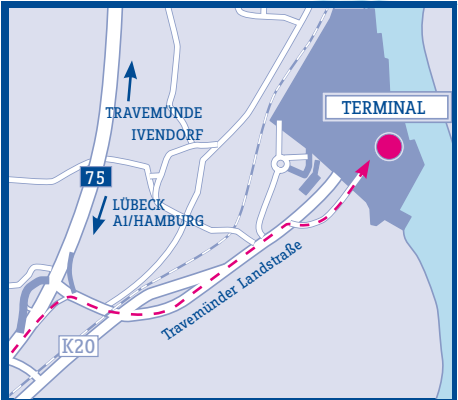
Polska 1, 81366 Gdynia  
Tel. +48 58 627 4167, +



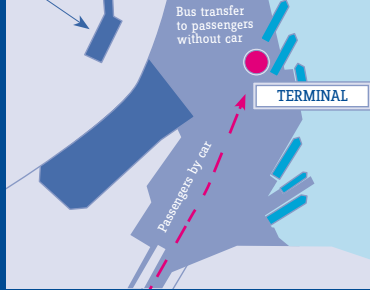
+46 176 207 607



Malmö



Passengers  
by foot



## TRAVEMÜNDE

Skandinavienkai,  
Zum Hafenplatz 1, 23570 Travemünde  
Tel. +49 450 280 532



+49 381 350 4350



## ROSTOCK

Ost-West-Straße 35, 18147 Rostock  
Tel. +49 381 350 4350

## FINNLINES PLC'S and REDERI AB NORDÖ-LINK'S STANDARD CONDITIONS OF CARRIAGE FOR PASSENGERS, THEIR LUGGAGE AND ACCOMPANYING VEHICLES

### 1. CONTRACT OF CARRIAGE: STANDARD CONDITIONS AND PARTIES

On the routes Helsinki-Travemünde-Helsinki, Helsinki-Gdynia-Rostock-Gdynia-Helsinki and Naantali-Kapellskär-Naantali the carrier is Finnlines Plc, Helsinki, Finland. The contract of carriage evidenced by the booking confirmation/ticket containing these standard conditions of carriage is between Finnlines Plc and the passenger.

On the Malmö-Travemünde-Malmö route the carrier is Rederi Ab Nordö-Link, Sweden. The contract of carriage evidenced by the booking confirmation/ticket containing these standard conditions of carriage is between Rederi Ab Nordö-Link and the passenger.

(Finnlines and Rederi Ab Nordö-Link are each jointly and separately hereinafter referred to as the 'carrier', and passenger hereinafter also referred to as 'customer'.)

### 2. SCOPE OF APPLICATION

These standard conditions of carriage as well as the provisions of the Act referred to in clause 19 below shall govern the carriage by sea of passenger and luggage (including hand/cabin baggage, any accompanying article and/or vehicle and/or caravan that are carried without any other shipping document issued by the carrier). Carriage by sea covers the period which the passenger and his/her luggage are in the terminal area of the carrier referred to in clause 1, in the port of departure after checking in, on board the vessel, in the terminal area of the carrier referred to in clause 1 or in the port of destination of the carrier. These Standard Conditions do not cover the package tour sales by the carrier or the carrier's business as tour operator.

On the Naantali-Kapellskär-Naantali route only passengers with vehicles are accepted.

### 3. RESERVATIONS

Reservations from travel agencies, online service or in Finland Finnlines phone +358 10 343 4500, e-mail: [passenger@finnlines.com](mailto:passenger@finnlines.com) or in Germany Finnlines Passagierdienst (Finnlines Deutschland GmbH), phone +49 451 1507 443, fax +49 451 1507 444, e-mail: [passagierdienst@finnlines.com](mailto:passagierdienst@finnlines.com).

**INFORMATION ON PASSENGERS:** The following information concerning all passengers must be provided when a reservation is made: surname, given name(s), gender, full date of birth and nationality as well as, at the passenger's request any impairment of mobility that could be of significance in relation to rescue measures (statutory passenger registration). In addition, a phone/mobile phone number and e-mail and mail address must be provided by the passenger. Passengers' personal data are handled in accordance with the applicable law.

**INFORMATION ON VEHICLES:** The following information must be provided when a place for a vehicle is reserved: registration number, type of vehicle and vehicle dimensions, including any additional load affecting the dimensions of the vehicle. If it is established at the check-in that the dimensions of a vehicle exceed the figures provided when the reservation was made, an effort will be made to reserve a new place and the customer will be charged an additional fee in accordance with the price list. However, the carrier cannot guarantee the availability of a new place. One passenger, with an appropriate driving licence, can take only one vehicle. Vehicles carrying commercial goods and vehicles registered for commercial transportation are booked as cargo.

PETS: see clause 10.

**HAZARDOUS AND DANGEROUS SUBSTANCES:** Transporting hazardous and dangerous substances as luggage or as hand/cabin baggage is not permitted, except gas cylinders connected to camper vans/caravans. The valves of gas cylinders must be kept closed throughout the time on board the ship.

**FIREARMS AND AMMUNITION:** On certain routes, the passenger has a possibility to transport firearms and ammunition for personal use. Transport arrangements of the firearms and ammunition shall be made at the time the reservation is made. Upon the reservation, a written commitment, where the passenger commits him/herself to follow the domestic and international legislation regarding the firearms as well as orders given by the master of the vessel, shall be sent to the passenger. In the commitment, the passenger commits him/herself in writing to leave the firearms in a locked place situated on the car deck which only the passenger him/herself has access to. The master of the vessel can, when necessary, refuse to carry firearms and ammunition on certain departures. The carrier is not responsible towards the passenger in case the master of the vessel has made a decision not to allow the passenger to transport firearms and ammunition on a certain route.

### 4. CHANGING RESERVATIONS

On routes Helsinki-Travemünde-Helsinki and Helsinki-Gdynia-Rostock-Gdynia-Helsinki, changes that do not affect the price of a reservation may be made free of charge at the latest 30 days prior to departure. On routes Naantali-Kapellskär and Malmö-Travemünde changes that do not affect the price of a reservation may be made at the latest 10 days prior to departure. On routes Helsinki-Travemünde-Helsinki and Helsinki-Gdynia-Rostock-Gdynia-Helsinki changes made later than this the

carrier charges EUR 30/one-way/reservation. On the routes Naantali-Kapellskär and Malmö-Travemünde the charge is EUR 15/one-way/reservation. If the new date of travel is in a period when higher fares apply, the difference between the fares is charged. If a reservation is changed and later cancelled, any cancellation fees are charged in accordance with the original travel dates and the date on which the reservation was changed.

### 5. TERMS OF CHANGES, PAYMENT AND CANCELLATION

On routes Helsinki-Travemünde-Helsinki and Helsinki-Gdynia-Rostock-Gdynia-Helsinki, a reservation must be paid 30 days prior to departure. If a reservation is made later than 30 days before departure, it must be paid for immediately. If the passenger cancels a reservation no later than 30 days before the announced departure, the fare is reimbursed. If the passenger cancels the reservation or parts of it 29-15 days prior to the departure, 25% of the fare of the cancelled part of the reservation will be charged. If the passenger cancels the reservation or parts of it 14-2 days prior to the departure, 50% of the fare for the cancelled parts will be charged. The full fare for the voyage will be charged for places cancelled less than 48 hours before the announced departure date. A cancellation shall be deemed to have been made on the date on which it is received by the carrier. If the cancellation has been received during a bank holiday or weekend, the cancellation is handled on the very next workday. No refund shall be paid in cases of 'no show'. If the return part of a two-way ticket is not used, the fare for the travelled voyage will be deducted from the sum paid and a sum in accordance with the terms of cancellation will be reimbursed. A deduction of EUR 15 per booking for office expenses is always made from the sum repaid.

On routes Naantali-Kapellskär and Malmö-Travemünde a reservation must be paid for 10 days prior to departure. If a reservation is made less than 10 days before departure, it must be paid for immediately. If the passenger cancels a reservation no later than 10 days before the departure, the fare is reimbursed. If the passenger cancels the reservation or parts of it 9-5 days prior to the departure, 25% of the fare for the cancelled part will be charged. If the passenger cancels the reservation or parts of it 4-2 days prior to the departure, 50% of the fare for the cancelled places will be charged. The full fare for the voyage will be charged for places cancelled less than 48 hours before the announced departure date of the vessel. A cancellation shall be deemed to have been made on the date on which it is received by the carrier. If the cancellation has been received during a bank holiday or weekend, the cancellation is handled on the very next workday. No refund shall be paid in cases of 'no show'. If the return part of a two-way ticket is not used, the fare for the travelled voyage will be deducted from the sum paid and a sum in accordance with the terms of cancellation will be reimbursed. A deduction of EUR 15 per reservation for office expenses is always made from the sum repaid.

Special terms of changes, payments and cancellations can be applied to Finnlines offers. These special terms are expressed in the context of the offer. 'Early Bird' offer reservations must be booked and paid by the end of February. No money will be refunded, in case of a cancellation of an 'Early Bird' offer. By paying their reservation, the passenger agrees to the special terms stipulated in the offer.

### 6. CHANGES TO FARES AND TIMETABLES

The carrier reserves the right to alter fares and timetables without prior notice. Times shown in timetables (departure, arrival and sailing time at sea) cannot be guaranteed. The carrier assumes no liability for damages or costs incurred by the passenger as a result of any changes, irrespective of the nature or type of these damages or costs, if the changes are due to weather conditions or other force majeure causes. Regarding the carrier's liability, see clauses 15 and 19.

### 7. DISCOUNTS

Discount, benefit- and offer-related reservations must be booked and paid in advance. Discounts are not granted at the check-in in the harbour and are not refunded afterwards. Only one discount per passenger or one discount per vehicle. Documents indicating entitlement to any discount must be presented upon request. Limited amount of discounted places. Different offers/discounts cannot be combined.

### 8. JUNIOR/CHILD FARES

The junior/child fares indicated in the price tables apply to juveniles (aged 13-17) or children (aged 6-12) travelling in the same cabin as their parents or guardian. Children under 6 travel free of charge. A person travelling with a child under 6 must always reserve a separate cabin. Youths travelling alone, must pay full fare for adults. Children under 14 years of age are not permitted to travel alone. Youths 14-17 years of age travelling alone, need a written permit by their parent or legal guardian.

### 9. GROUPS

Separate terms of payment and cancellation apply to groups. Ten persons paying the full group fare shall be deemed to constitute a group. All of the members of a group must depart and return on the same date and be covered by a single invoice. Please ask the carrier for more detailed group terms. To youth groups the carrier applies separate group terms which the carrier submits on request.



## 10. PETS

Transport arrangements regarding pets shall be agreed upon reservation. Each vessel has a limited number of cabins for passengers travelling with pets. No more than two pets per cabin are allowed. A person travelling with a pet must reserve a whole cabin. Pets may not be taken into bars, restaurants or saunas on board the vessel and the presence of pets in other public areas must be kept to a minimum. The passenger travelling with a pet is liable for any damage caused by the pet. The passenger must have with him/her the documents required by the authorities. If the authorities refuse entry to a pet on board on the grounds of inadequate documentation, liability for the costs thus incurred resides with the passenger. Regarding carrier's liability for pets, see clauses 15, 16 and 19. Horse and husky transports are handled according to a separate pricing policy.

## 11. TRAVEL DOCUMENTS: PASSPORT, VISA AND OTHER TRAVEL PERMIT

**EU and Swiss citizens:** The passenger must have a valid passport or identity card issued in an EU country or in Switzerland and which the state in question has approved as a travel document. A Finnish citizen can also present an ID card with photo, granted after 1.3.1999 (excluding a temporary ID card, an ID card issued to a minor without the consent of the parent/guardian and an ID card granted to a foreign citizen).

**Citizens of other countries:** The passenger must have a valid passport and other necessary travel documents.

**Children:** Children must have their own passport or be entered in the passport of a parent accompanying them.

**Responsibility for inadequate travel documents:** Passengers themselves are responsible for ascertaining what travel documents are required. If an authority refuses entry ashore or on board to a passenger on the grounds of inadequate travel documents, the passenger is liable for any costs incurred to him/her (incl. the return journey) or to the carrier.

The identity of all passengers will be checked at the check-in in the harbour.

## 12. TICKET

The booking confirmation which the passenger receives when making the reservation, acts as a travel ticket as soon as the travel has been paid in its entirety. The booking confirmation / the ticket, which evidences the contract of carriage incorporating the standard conditions, is a personal document which is valid for carriage of only the persons and vehicles specified and for receipt of the services indicated on it. A passenger may not transfer the rights indicated on the ticket to another person. Anyone who has obtained a ticket on behalf of another person shall be considered to have been empowered to do so as well as to accept these standard conditions of carriage on behalf of the other person.

## 13. CHECK-IN

A valid passport or an identity card and the booking confirmation which acts as a travel ticket as soon as the travel has been paid, must be displayed in the check-in. Against these documents, the passenger receives his or her boarding card or cabin key. The check-in is closed one (1) hour or one and half (1.5) hours before the vessel's announced departure time. Passengers must observe the check-in times to ensure that their embarkation and the loading of their vehicle on board the vessel can be arranged appropriately without causing unnecessary delay to the departure of the vessel. If passengers arrive at the check-in after it has closed, neither they nor their vehicles can be guaranteed a place on the ship.

## 14. GENERAL SAFETY REGULATIONS IN THE CHECK-IN AREA AT THE TERMINAL AND ON BOARD THE VESSEL

**RESTRICTIONS ON LUGGAGE ON THE VESSEL:** Passengers may not bring to the terminal or on board the vessel any luggage (including vehicle) or hand baggage that can cause a hazard or inconvenience to the terminal, the vessel, people, other luggage, hand baggage or cargo. The carrier is entitled to carry ashore, render innocuous or destroy any such luggage and/or hand baggage at the passenger's expense and without any liability on its own part.

**SECURITY CHECK:** All passengers, vehicles, luggage and hand baggage going on board the vessel can be subjected to a security inspection in the departure area of the terminal or on board the vessel. A passenger who refuses to undergo a security inspection can be denied access to the vessel and the authorities will be notified of the matter.

**DISSEMBARKING FROM THE VESSEL BEFORE DEPARTURE:** A passenger who has boarded the vessel may not disembark from it before departure. If, nevertheless, the passenger does disembark, all luggage (including vehicle) and hand baggage must be removed from the vessel. A passenger who has disembarked from the vessel before its departure must compensate the carrier for the costs resulting from disembarkation and the removal of the vehicle.

**SAFETY ON BOARD:** After they have boarded the vessel, passengers must familiarise themselves with the safety instructions displayed in the cabins. Passengers are obliged to comply with the regulations in force on board the vessel and to follow the disciplinary instructions and safety rules issued by crew members. Passengers must always have their boarding card or

cabin key with them while they are on the vessel.

**REMOVAL OF A PASSENGER FROM A VESSEL:** The carrier reserves the right to refuse to carry a passenger or to remove from the vessel a passenger who may pose a danger to the safety of other passengers, the crew or the vessel. A passenger who has been removed from the vessel is liable to compensate the carrier for the cost of removing him or her and his or her vehicle.

**SAFETY ON THE CAR DECK:** All goods in a vehicle must be well secured. It is forbidden to loiter on the car deck during the voyage. Smoking and naked flames are forbidden on the car deck. The valves of gas cylinders connected to campers/caravans must be kept closed throughout the time on board the vessel. Due to safety reasons, there is a recording video surveillance on the vessels. The video surveillance is carried out in accordance with legislation and is indicated by signs in the controlled areas.

## 15. LIABILITY OF CARRIER

The liability of the carrier; any amount to be compensated for the death or personal injury to a passenger, loss of or damage to luggage and passenger's deductible (sum to be deducted from loss or damage) is always limited in accordance with the provisions of the applicable law referred to in clause 19, or of the 1974 Athens Convention Relating to the Carriage of Passengers and their Luggage by Sea, as amended by protocol dated 29.3.1999 ('Athens Convention'). The carrier is not liable for any damage or loss or for costs arising from delay which are caused before the beginning or after the termination of the carriage by sea of passengers and their luggage as defined in clause 2 above. The carrier is not liable for the loss of or injury to live animals resulting from any special risks inherent in that kind of carriage. Notwithstanding anything contained in these standard conditions the carrier's aggregate liability resulting from any distinct occasion is always globally limited in accordance with the provisions of limitation of liability on maritime claims under the Finnish Maritime Act or of international conventions as found applicable by the competent court referred to under clause 20 below.

Possible claims must be presented in written form to the carrier at the latest one month after the end of the journey.

## 16. LIABILITY OF THE CARRIER'S EMPLOYEES, AGENTS AND INDEPENDENT CONTRACTUAL PARTNERS

If an action is brought directly against the owner of the vessel, charterer, manager, its master, crew or any other person in the employ of the carrier, a carrier agent or independent contractor or against anyone having an interest in the vessel, such a person shall be entitled to avail himself of defences and limits of liability which the carrier is entitled to invoke under the contract of carriage and the relevant act specified in clause 19 below or the Athens Convention, as if they had been expressly made for his benefit. The carrier enters into the contract of carriage not only on its own behalf, but also as an agent and trustee for such persons who shall to this extent be or be deemed to be parties to the contract of carriage. The indemnities payable by the carrier and the other above-mentioned persons may in no event, even in aggregate, exceed the maximum amounts specified in the contract of carriage nor in the law specified in clause 19 below nor in the Athens Convention where applicable.

## 17. RIGHT OF CANCELLATION OF A CONTRACT

The rights of both the passenger and the carrier to cancel the contract of carriage are specified in the law applicable in accordance with clause 19.

## 18. PERFORMANCE OF TRANSPORTATION

The carrier is entitled to perform the transport by another vessel than the one announced or specified on the ticket.

## 19. APPLICABLE LAW

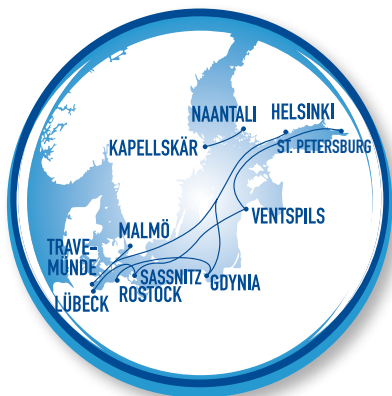
When Finlines Pls is the carrier the contract of carriage is subject to Finnish law. When Rederi Ab Nordö-Link is the carrier the contract of carriage is subject to Swedish law. If the terms of these standard conditions are in conflict with the mandatory provisions of the Athens Convention or the mandatory provisions of national legislation that are applicable to any dispute concerning this contract of carriage, the mandatory provisions shall supersede the terms of standard conditions of this contract of carriage insofar as there is a conflict between these standard conditions and the provisions. Otherwise, the terms of these standard conditions of carriage shall apply.

## 20. JURISDICTION

Disputes arising under or in relation to the contract of carriage shall be determined at the option of the plaintiff by the competent court

- at the place of permanent residence or principal place of business of the defendant,
- at the place of departure or the place of destination of the vessel according to the contract of carriage.

If the Athens Convention applies to the contract of carriage in accordance with clause 19 above, the dispute may, at the option of the plaintiff, be determined by the court specified in Article 17, 1 (c) and (b) of the said Convention.



**Finnlines**  
a Grimaldi Group company =

## Reservations

### Finland

+358 10 343 4500

### Sweden

+46 771 340 900

### Germany

+49 451 150 7443

[passenger@finnlines.com](mailto:passenger@finnlines.com)

[www.finnlines.com](http://www.finnlines.com)

Your travel agency:

All rights reserved 01/2012. Prices are valid until 31.12.2012 or until a new timetable is published.